

INSTALLATION MANUAL

VENERA TOUCH PANEL

TIS VENERA AC THERMOSTAT




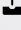


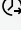

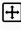
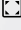
Model: VEN-AC-5R-LC



PRODUCT INFORMATION

This wall panel has three elegantly designed touch buttons to ramp up and dim down lighting. You can customize the dimming percentage based on your personal aesthetic desires.

PRODUCT SPECIFICATIONS

 Power Supply	Input Voltage	24 VAC 50/60 Hz
 Output	Number of channels Nominal voltage Nominal current per channel	5 relays for cool, heat, fan speed control 24 V AC 50/60 Hz 1 A / 230 VAC
 Output switching current	Max Continues Current	1A/24 VAC
 Output service life	Mechanical Endurance	> 10,000,000 OPS
 Output switching times	Operating time Releasing time Max. operating frequency	8 mS (at nomi. Volt) 5 mS (at nomi. Volt) 25 cycle/min
 TIS AIR	WIFI Signal Protocol Standard	2.4 GHz 802.11 b/g/n
 Reaction time		approx. 30ms
 Operating and display elements	Display touch buttons Temp sensor Infrared Receiver Backlight TIS AIR Upgrading	0.9-inch OLED Screen 4 Touch Capacitive Control Buttons Built-in Resistive Temp Sensor Controlled by TIS Remote Control 2 Colors Backlight Indicators TIS Protocol Messages & Commands By WIFI Connection
 Dimensions	Length x Width x Height	85mm x 42mm x 109mm
 Housing	Materials Internal Parts color IP rating	PC fire-proof/ Glass in front Black or White IP 50



BARCODE (UPC-A)





Read Instructions

We recommend that you read this Instruction Manual before installation.



Mounting Location

Install in a dry, indoor area with a suitable temperature and humidity range.



Safety instructions

Electrical equipment should only be installed and fitted by electrically skilled persons.

Failure to observe the instructions may cause damage to the device and other hazards.

These instructions are an integral part of the product and must remain with the end customer.



Warranty

There is a two-year warranty provided by law. The hologram warranty seal and product serial number are available on each device.



Programming

This device can be tested and programmed manually. Advanced programming requires knowledge of the TIS Device Search software and instruction in the TIS advanced training courses.



Simple Installation

You can use 2 screws to install this panel on wall; it fits on most junction box sizes.

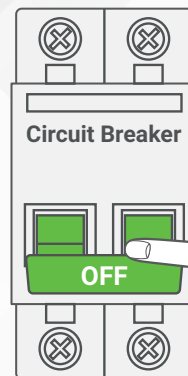




INSTALLATION STEPS

1»

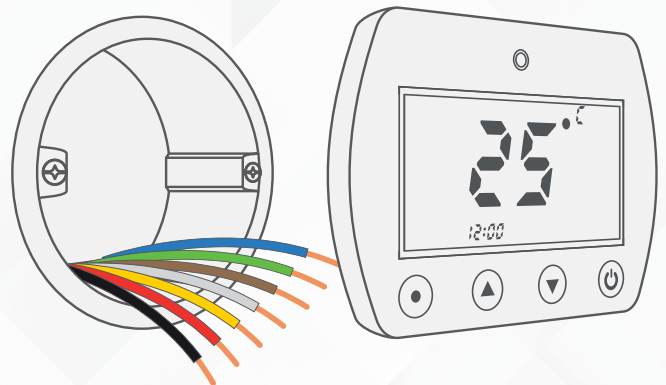
Turn off the power at the main circuit breaker to turn off voltage supply to the thermostat.



WARNING! HIGH VOLTAGE

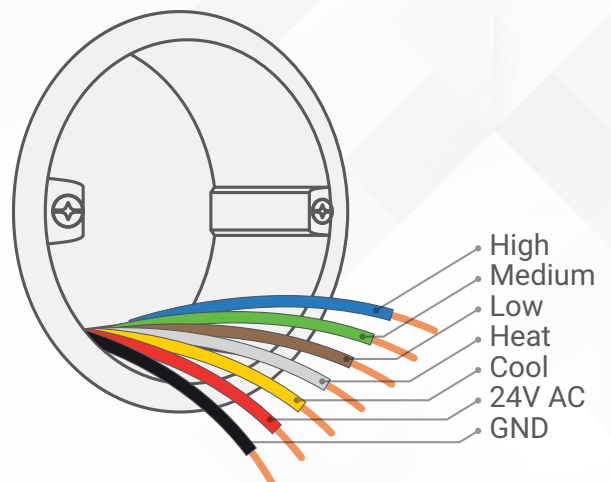
2»

Remove the old thermostat.



3»

You may find a total of 7 wires. Label all wires as per their connection.

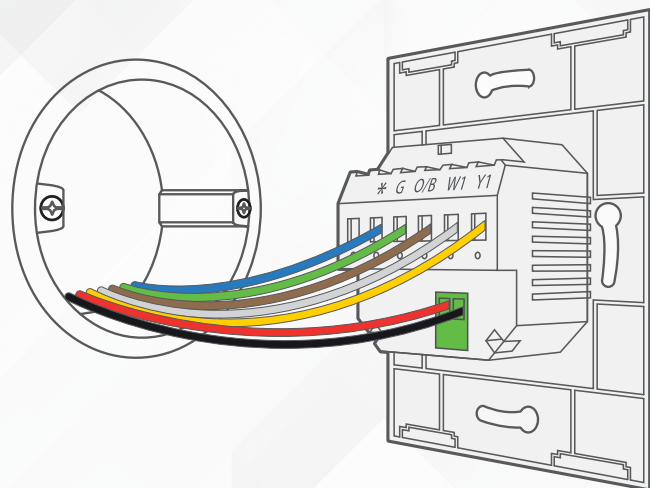




INSTALLATION STEPS

4»

- ▶ Connect the neutral wire to the N terminal.
- ▶ Connect the live wire to the L terminal.
- ▶ Connect each of the other wires to their respective terminals as instructed in the next step.



5»

Venera 5R-LC support 2 types of air conditioning systems; accordingly, you should connect your wires as per this table.

DOUBLE STAGE DUCTED SPLIT UNIT

Terminal Y1	Cool 1 wire
Terminal W1	Heat 1 wire
Terminal O/B	Valve reverse wire
Terminal G	Fan wire
Terminal *	Can be connected to second stage cool or heat, can be set by software

SINGLE STAGE DUCTED SPLIT UNIT WITH 3 FAN SPEEDS

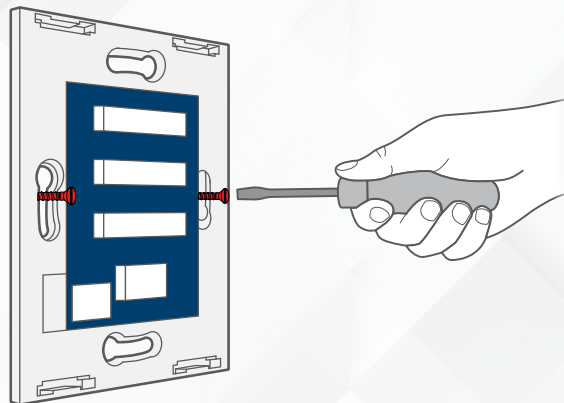
Terminal G1	Fan Low wire
Terminal G2	Fan Med wire
Terminal G3	Fan High wire
Terminal Y1	Cool 1 wire
Terminal W1	Heat 1 wire



INSTALLATION STEPS

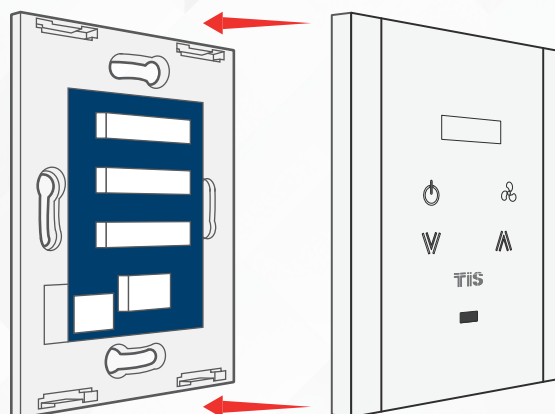
7»

Insert the Venera panel and the wires in the box, and secure the panel using 2 screws.



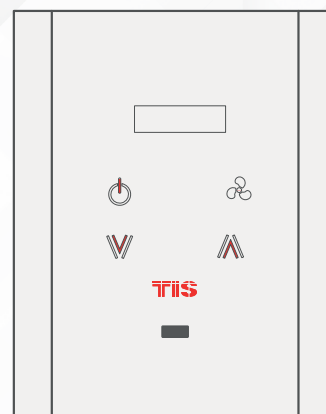
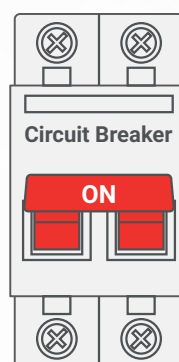
8»

Install the Venera panel's top cover as shown in the picture.



9»

Install the Venera panel, and turn the breaker on. The panel should turn on.



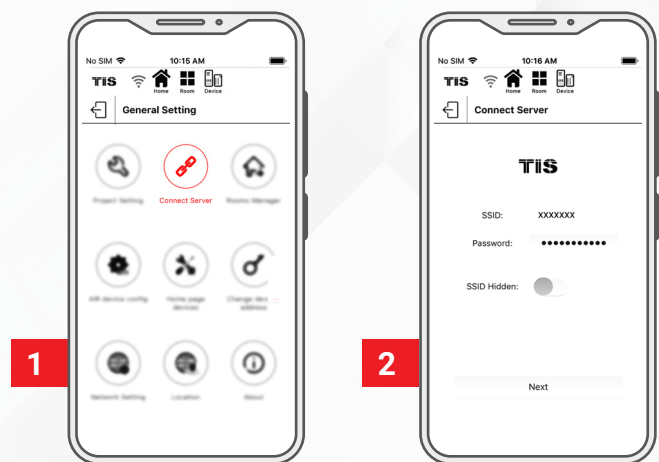
SERVER LINKING

In order for a project to be fully linked to the TIS server, server configuration must be enabled in just 1 product within that project.

If you have already done that with any other panel, just ignore these steps and proceed to configuration steps.

To do the server linking, complete the following steps:

- 1» In the TIS App, go to Settings ► Connect Server, and follow the steps by entering your SSID password.

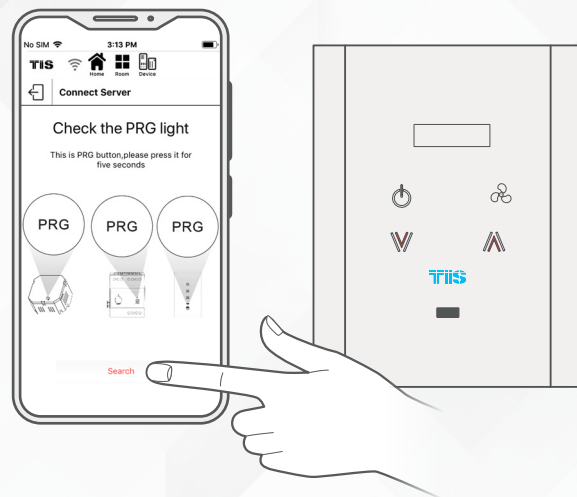


- 2» On the Venera panel, press and hold the TIS logo for 6 seconds. The logo will start blinking.

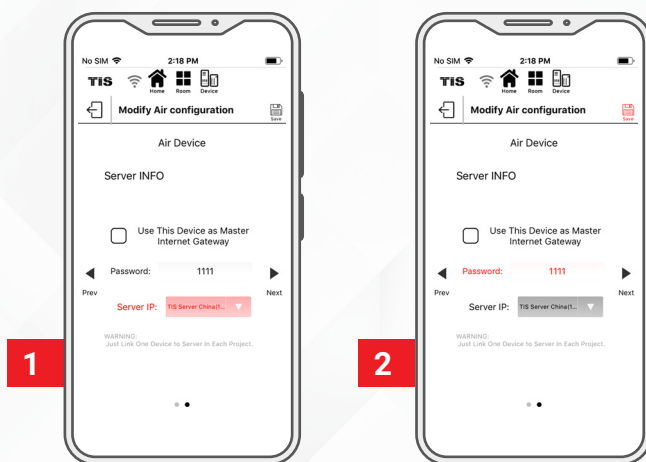


SERVER LINKING

3» On the TIS app, press Search and wait for a few seconds. The panel will link to your WiFi, and the TIS logo will turn blue.

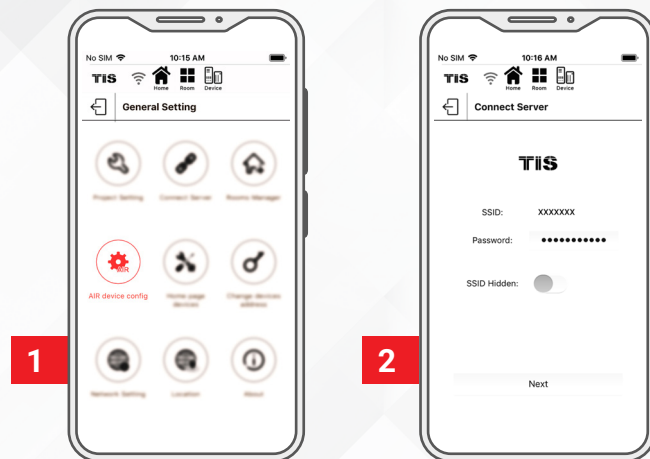


4» Select your server option and 4-digit password. Then, press Save.

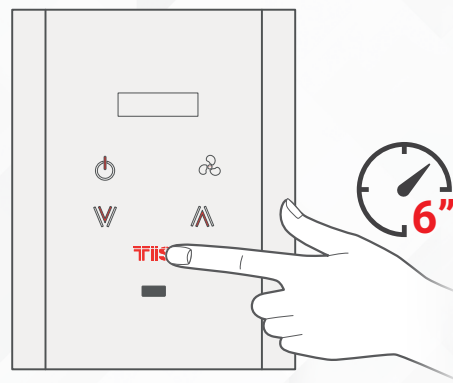


CONFIGURATION STEPS

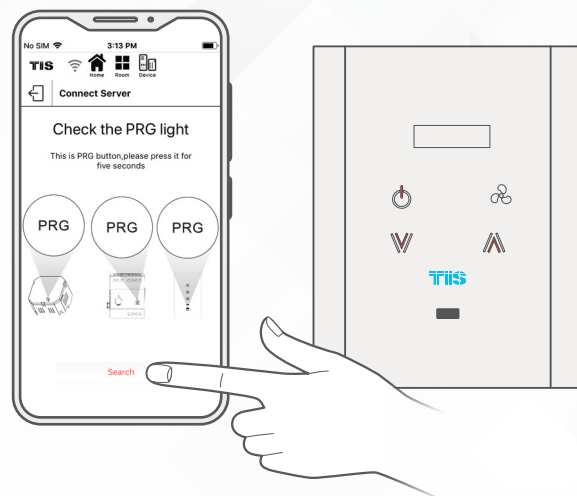
1 In the TIS App, go to the settings and select TIS Air config and enter your SSID password.



2 On the Venera panel, press and hold the TIS logo for 6 seconds; The logo will start blinking.

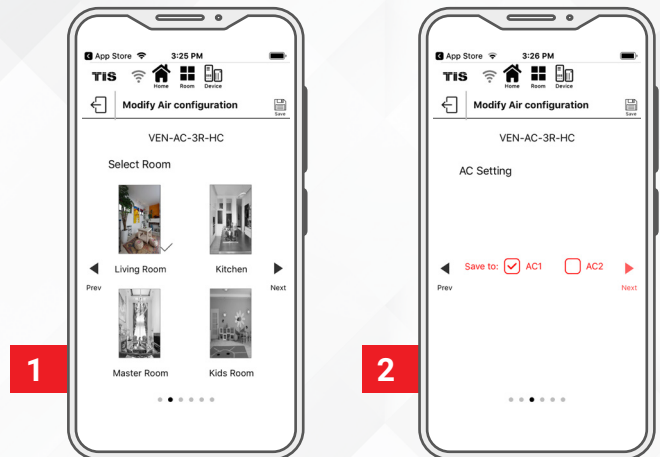


3 On the TIS app, press search and wait for a few seconds, the panel will link to your WiFi and the TIS logo will turn blue.



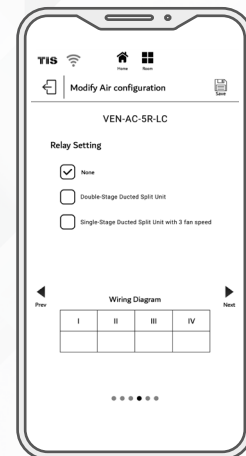
CONFIGURATION STEPS

4» Select the room. If the room has 2 thermostats, select the first or second thermostat.

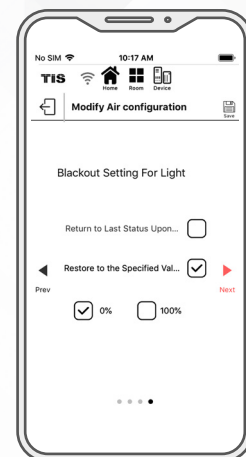


5» Select the type of your AC as per the wire connections that you set up. You can select from the following:

- ▶ Double-Stage Ducted Split Unit
- ▶ Single-Stage Ducted Split Unit with 3 fan speed

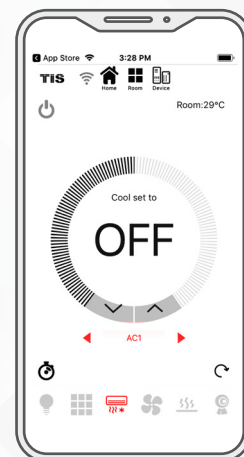
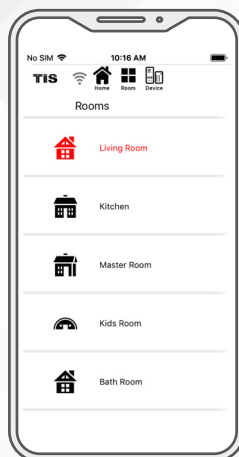


6» Select the blackout setting and temperature type.








CONFIGURATION STEPS

7 Go to the desired room and start controlling.



USER OPERATION

CONTROLLING AIR CONDITIONING

FUNCTION	CONTROL BUTTON	
Turn AC ON/OFF		Press the AC Power button to turn AC ON/OFF.
Increase Temperature		Press the up arrow button to increase temperature one degree.
Decrease Temperature		Press the down arrow button to decrease the temperature one degree.
Change Fan Speed		Press the fan button to change the speed between low, med, high, and auto.
Change AC Mood		Long press the fan button for 6 seconds until the mood is shown on the screen. Then, change the mood to cool, heat, fan, or auto by short pressing on the up and down arrow buttons. Once you select your mood, do not press any button for 5 seconds or until the main screen display returns.



TROUBLESHOOTING



PRG button blinks purple color rapidly

Reason: The panel address conflicts with another device in the TIS network. You need to press and hold the PRG button for 6 seconds so that the module can get a new address.



Device's PRG LED is RED

Reason: The device is not connected to Wi-Fi.



Device can't link to Wi-Fi router

Reason 1: The device is too far from the Wi Fi router.

Reason 2: The SSID or password is not correct.

Reason 3: Some setting in the Wi-Fi router is preventing new devices from being added.



Other TIS devices can't control the thermostat

Reason 1: Other device connections are not linked to the same Wi-Fi network.

Reason 2: The programming address is wrong.



Panel shows wrong temperature above 100°C

Reason: The panel temperature sensor is not connected correctly.



Panel is not responding to settings to turn AC ON/OFF and control fan speed

Reason: The panel's AC type is set to null by default. You need to select the correct type of AC using the mobile ap or software configuration.